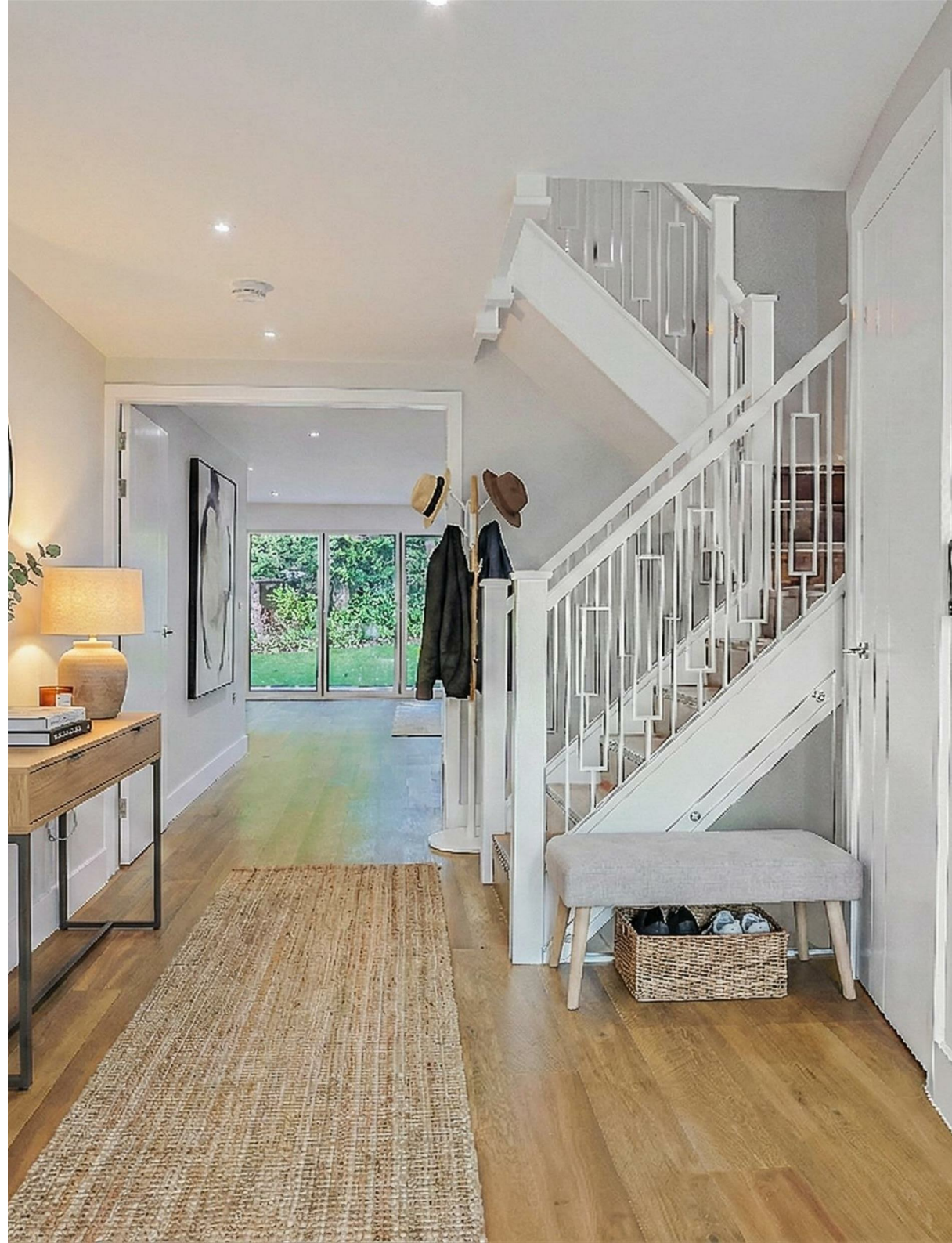




CRICHEL MOUNT ROAD,
EVENING HILL











DETAILS

Spanning 3,791 sq. ft. over four luxurious floors, this exceptional contemporary home features a cinema, gym, and is offered with no forward chain.

Arranged over four floors and extending to approximately 3,791 sq ft, the property offers elegant, light-filled accommodation with a strong emphasis on modern living and entertaining.

The ground floor is centred around an impressive open-plan kitchen, living and dining area, flooded with natural light and opening onto the landscaped rear garden via bi-fold doors. A stylish cloakroom and integral double garage complete this level.

The lower ground floor provides exceptional leisure space, including a cinema/games room, gym and utility room.

The first floor features a generous principal suite with balcony, walk-in dressing room and luxury en-suite, alongside two further double bedrooms and modern bathrooms. Two additional double bedrooms and a family bathroom occupy the second floor.

Outside, a gated driveway provides secure parking for multiple vehicles, while the rear garden offers an attractive and private space with a summer house, ideal for outdoor entertaining.

Virtually staged for illustrative purposes only.

AT A GLANCE

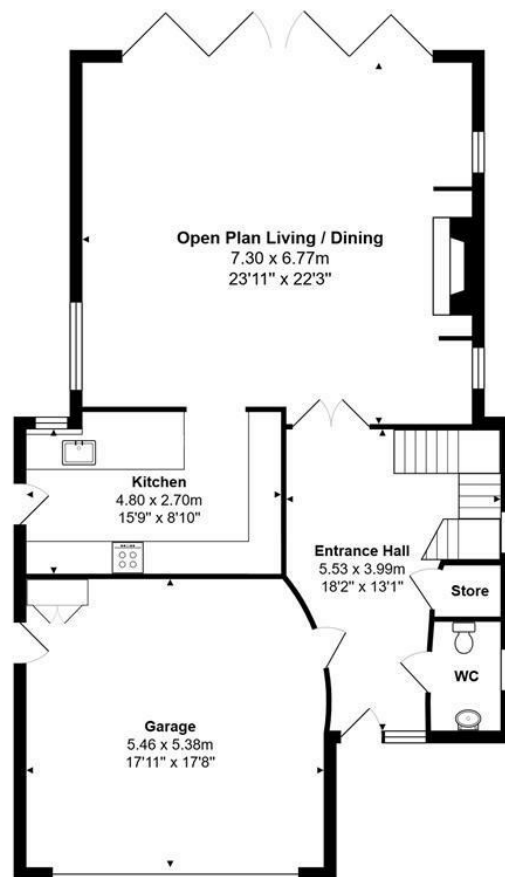
Guide Price:	£2,195,000
Tenure:	Freehold
Stamp Duty:	£177,150 (Main Home)
Local Authority:	BCP Council
Council Tax:	£4,509.88 Band H

KEY FEATURES

- 5 spacious double bedrooms
- 4 beautifully appointed bathrooms
- Luxurious open plan kitchen, living and dining space
- Cinema and gym on lower ground floor
- Gated driveway with integral double garage
- Quiet and highly sought after cul-de-sac location
- Extensively refurbished throughout
- Offered with no forward chain
- Landscaped, low maintenance rear garden



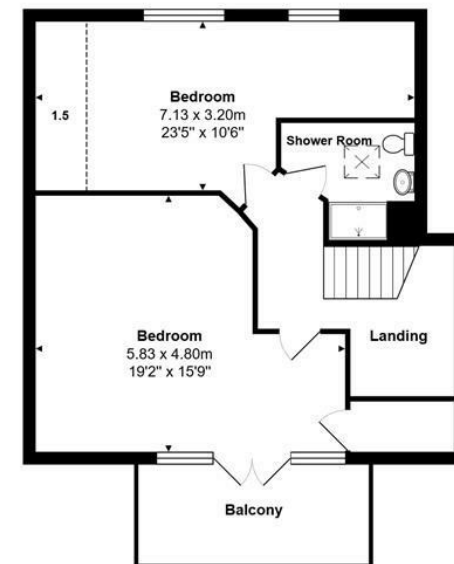
Lower Ground Floor



Ground Floor



First Floor



Second Floor

Total Area: 352.3 m² ... 3792 ft² (excluding balcony)

All measurements are approximate and for display purposes only

LLOYDS

Important notice Lloyds Property Sales Ltd, its clients and any joint agents give notice that 1: They are not authorised to make or give any representations or warranties in relation to the property either here or elsewhere, either on their own behalf or on behalf of their client otherwise. They assume no responsibility for any statement that may be made in these particulars. These particulars do not form part of any offer or contract and must not be relied upon as statements or representations of fact. 2: Any areas, measurements or distances are approximate. The text, photographs and plans are for guidance only and are not necessarily comprehensive. It should not be assumed that the property has all necessary planning, building regulation or other consents and Lloyds Property Sales have not tested any services, equipment or facilities. Purchasers must satisfy themselves by inspection or otherwise.